

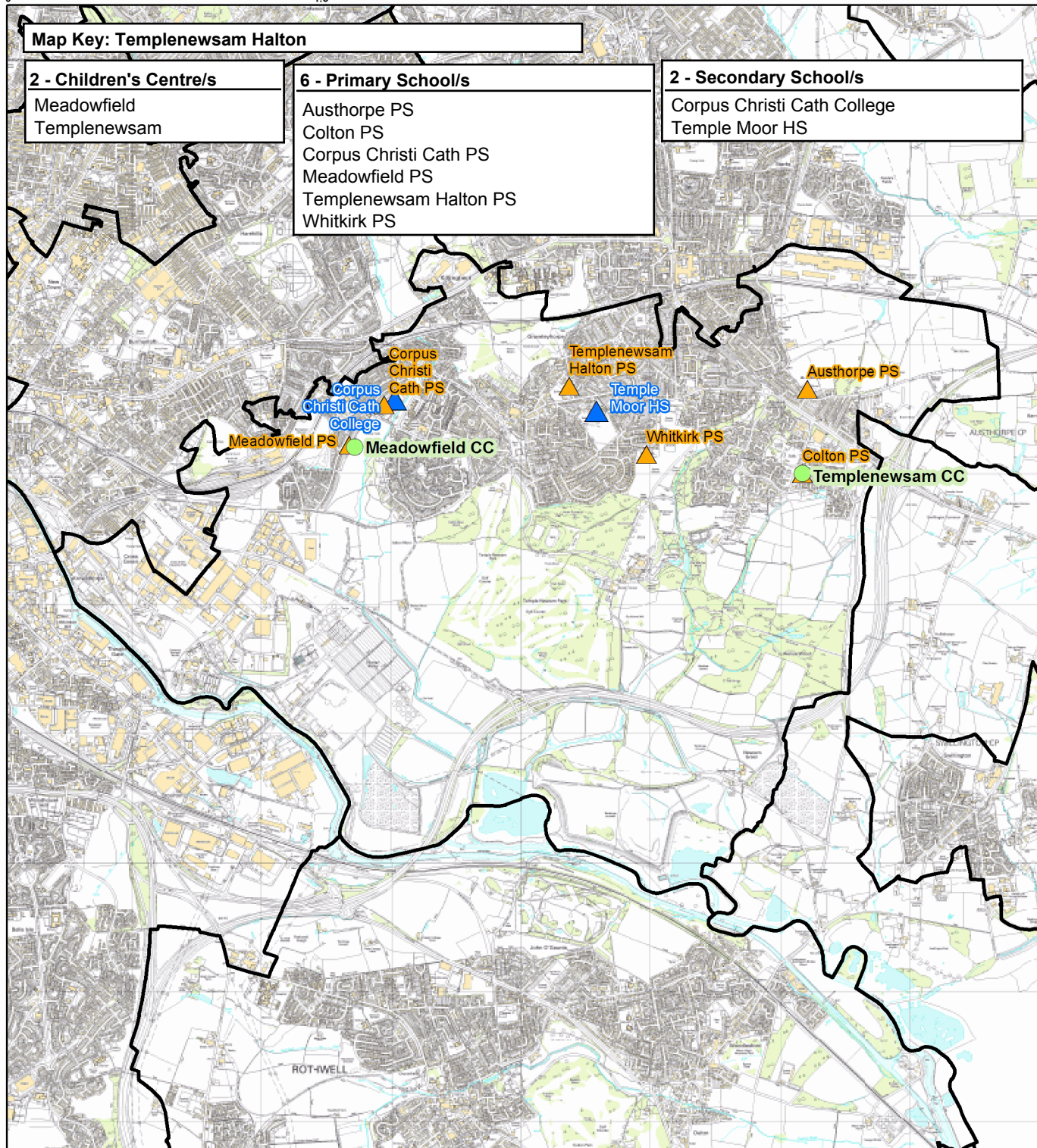
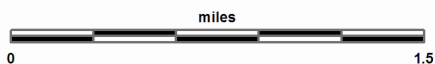
# Templenewsam Halton

This report was produced by the Children's Performance Service on 21/08/2012. The information in these overviews are based on the cluster data profile version 5.12.

For more information telephone 0113 39 50701 or email [educ.pmi@leeds.gov.uk](mailto:educ.pmi@leeds.gov.uk) or visit:

[www.leedsinitiative.org/ClusterDataProfile.aspx](http://www.leedsinitiative.org/ClusterDataProfile.aspx)

The map to the right gives the position of the cluster in Leeds. The map below shows the location of the Children's Centres, Primary and Secondary Schools in the cluster.



## Map Key: Templenewsam Halton

### 2 - Children's Centre/s

Meadowfield  
Templenewsam

### 6 - Primary School/s

Austhorpe PS  
Colton PS  
Corpus Christi Cath PS  
Meadowfield PS  
Templenewsam Halton PS  
Whitkirk PS

### 2 - Secondary School/s

Corpus Christi Cath College  
Temple Moor HS

**Cluster Overviews key****Data Period:**

The codes in the key to the right are for the time periods that the data in these reports cover. They will appear next to all data sets.

Academic Year  
Calendar Year  
Financial Year  
Snapshot  
Other

**DP:A**  
**DP:C**  
**DP:F**  
**DP:S**  
**DP:O**

**Cluster Overview**

Data Source: January School Census					Data Source: January School Census				
					DP: S				
		Total Number on roll					Total Number on roll		
Primary Schools	DFE	2010	2011	2012	Secondary Schools	DFE	2010	2011	2012
Austhorpe Primary School	2463	197	195	206	Temple Moor High School	4046	1273	1238	1222
Colton Primary School	2453	247	247	250	Corpus Christi Cath College	4752	929	944	942
Corpus Christi Catholic PS	3370	376	376	367	<b>Total</b>		<b>2202</b>	<b>2182</b>	<b>2164</b>
Meadowfield Primary School	3923	439	440	450					
Templenewsam Halton Primary School	2465	497	496	499					
Whitkirk Primary School	2466	287	308	332					
<b>Total</b>		<b>2043</b>	<b>2062</b>	<b>2104</b>					

Data Source: Children's Services - Feb 2012		DP: S
Children's Centre reach area registration for families of children aged 0-5		% Registered
Cluster		64.89
Wedge		61.66
Leeds all		60.23

Data Source: Children's Services	
Children's Centre	Ofsted ID
Meadowfield	EY315030
Templenewsam	

Data Source: The office of National Statistics population mid-year estimates									DP: S
Population Estimates	0-15			Working Age			60/65+		
Number of people by age group/year	2008	2009	2010	2008	2009	2010	2008	2009	2010
Cluster	4739	4728	4657	15309	15303	15373	5046	5051	5052
Wedge	47897	48099	48486	176361	180282	184227	45628	46348	47187
Leeds all	132741	133396	134493	516578	522769	531036	129937	131536	133240

Data Source: NHS Leeds													DP: S
Under Fives	September 2010						September 2011						
Number of infants by age group:	0-1	1-2	2-3	3-4	4-5	Total	0-1	1-2	2-3	3-4	4-5	Total	
Cluster	299	305	321	312	318	1555	310	302	320	333	327	1592	
Wedge	3707	3509	3422	3243	3351	17232	3579	3695	3530	3416	3275	17495	
Leeds all	10202	9848	9478	9195	9113	47836	9996	10173	9787	9438	9319	48713	

Data Source: January School Census												DP: S
Percentage of pupils who are:	Black and Minority Ethnic			English as an Additional Language			Free School Meal Eligible			Special Education Needs		
Primary	2010	2011	2012	2010	2011	2012	2010	2011	2012	2010	2011	2012
Cluster school	11.3	12.7	15.0	6.5	8.0	8.9	22.4	24.5	24.8	20.1	19.0	17.9
Cluster residence	12.6	13.6	17.4	6.8	7.8	9.6	23.3	24.6	25.6	20.0	18.7	18.5
Wedge school	13.1	14.1	16.1	8.8	9.5	10.2	21.4	22.2	22.2	19.0	18.6	18.2
Total primary	23.6	24.8	26.4	15.8	16.5	17.1	21.5	22.2	22.0	17.8	17.8	17.4
Secondary	2010	2011	2012	2010	2011	2012	2010	2011	2012	2010	2011	2012
Cluster school	5.9	6.6	7.6	4.3	4.8	5.4	20.4	19.0	18.8	31.9	33.7	31.6
Cluster residence	9.1	8.7	10.2	6.1	5.6	6.4	18.9	19.4	19.2	27.7	29.5	28.6
Wedge school	7.5	8.1	9.0	4.3	4.8	5.5	19.1	19.2	19.1	22.0	19.3	21.4
Total secondary	18.6	19.4	20.4	10.4	10.0	11.1	19.0	19.4	19.5	21.4	20.4	19.0
<b>Leeds all</b>	<b>21.4</b>	<b>22.5</b>	<b>23.9</b>	<b>13.4</b>	<b>13.7</b>	<b>14.6</b>	<b>20.6</b>	<b>21.1</b>	<b>21.1</b>	<b>20.0</b>	<b>19.6</b>	<b>18.7</b>

<b>Data Source: HM Revenue and Customs - taken on 31st August 2007-2009</b>										<b>DP: S</b>
<b>Child Poverty</b>	Number of children (under 16) in families in receipt of CTC or IS/JSA			Number of children (all ages) in families in receipt of CTC or IS/JSA			Number of children in poverty, by age of youngest child, 2009			
	<b>2007</b>	<b>2008</b>	<b>2009</b>	<b>2007</b>	<b>2008</b>	<b>2009</b>	<b>0-4</b>	<b>5-10</b>	<b>11-15</b>	<b>16-19</b>
Cluster	1160	1180	1180	1275	1310	1335	775	350	145	65
Wedge	10885	10860	11645	12055	12130	13000	7265	3380	1805	550
Leeds all	30235	29700	31030	33690	33300	34965	18720	9640	5115	1490

<b>Data Source: Children's Services - Summer Term 2011</b>					<b>DP: S</b>
<b>Nursery Education Grant Claims</b>	Number of eligible children	Number of:			
		Claims by childcare setting	Resident Claims	Non Resident Claims	
Cluster	499	456	318	139	
Leeds all	14500	13851	9704	4148	

<b>Data Source: January School Census and 2010 Index of Multiple Deprivation</b>										<b>DP: S</b>
<b>IMD</b>	% of pupils resident in most deprived areas	3% most deprived			10% most deprived			20% most deprived		
		<b>10</b>	<b>11</b>	<b>12</b>	<b>10</b>	<b>11</b>	<b>12</b>	<b>10</b>	<b>11</b>	<b>12</b>
<b>Primary</b>										
Cluster school		19.6	20.0	19.5	47.4	46.0	46.9	48.5	48.7	49.8
Cluster residence		21.5	21.0	20.6	44.6	43.9	46.2	44.6	43.9	46.2
Wedge school		7.7	8.1	7.9	26.4	25.6	26.0	32.3	34.4	34.8
Total primary		8.2	8.4	8.3	28.1	27.1	27.3	36.6	37.6	38.0
<b>Secondary</b>										
Cluster school		13.4	15.4	15.4	39.0	37.7	38.7	47.4	48.7	48.7
Cluster residence		16.7	18.0	17.7	35.9	37.6	37.3	35.9	37.6	37.3
Wedge school		6.5	7.7	7.8	22.6	22.4	22.8	27.9	30.4	30.7
Total secondary		7.0	7.5	7.6	24.0	23.5	23.8	32.3	33.5	33.6
<b>Leeds all</b>		<b>7.7</b>	<b>8.0</b>	<b>8.0</b>	<b>26.4</b>	<b>25.7</b>	<b>25.9</b>	<b>34.8</b>	<b>35.9</b>	<b>36.2</b>

<b>Data Source: January School Census and CACI ACORN</b>											<b>DP: S</b>
<b>KEY: Wealther Achievers(WA), Urban Prosperity (UP), Comfortably Off (CO), Moderate Means (MM), Hard Pressed (HP)</b>											
Percentage of pupils in each ACORN category	2011					2012					
	<b>WA</b>	<b>UP</b>	<b>CO</b>	<b>MM</b>	<b>HP</b>	<b>WA</b>	<b>UP</b>	<b>CO</b>	<b>MM</b>	<b>HP</b>	
<b>Primary</b>											
Cluster school	11.3	0.2	32.1	9.3	46.6	10.8	0.3	31.7	9.5	47.1	
Cluster residence	11.8	0.2	35.4	7.7	44.7	11.6	0.2	33.4	7.6	46.7	
Wedge school	12.5	1.1	31.1	17.7	36.9	12.2	1.3	30.7	17.9	37.3	
Total primary	15.4	5.9	27.8	15.8	34.3	15.0	6.0	27.7	15.9	34.6	
<b>Secondary</b>											
Cluster school	9.3	0.7	35.9	11.5	41.9	8.9	0.6	35.8	10.9	43.0	
Cluster residence	15.5	0.3	36.9	8.0	38.8	15.1	0.3	37.6	7.3	39.2	
Wedge school	14.4	0.8	32.9	16.0	35.3	13.9	0.8	32.9	16.0	35.6	
Total secondary	17.1	5.2	29.7	14.7	32.5	16.9	5.3	29.8	14.7	32.6	
<b>Leeds all</b>	<b>16.1</b>	<b>5.6</b>	<b>28.5</b>	<b>15.4</b>	<b>33.6</b>	<b>15.8</b>	<b>5.7</b>	<b>28.5</b>	<b>15.4</b>	<b>33.8</b>	

<b>Data Source: DWP information Directorate</b>													<b>DP: F</b>
<b>KEY: Job Seekers Allowance (JSA), Incapacity Benefit (IB), Lone Parent Benefit (LPB), Total Out of Work (TOW)</b>													
<b>Unemployment</b>	Percentage of working age people in receipt of:	2009				2010				2011			
		<b>JSA</b>	<b>IB</b>	<b>LPB</b>	<b>TOW</b>	<b>JSA</b>	<b>IB</b>	<b>LPB</b>	<b>TOW</b>	<b>JSA</b>	<b>IB</b>	<b>LPB</b>	<b>TOW</b>
Cluster		5.1	7.0	2.5	15.0	4.8	7.0	2.3	14.6	4.7	6.9	2.2	14.3
Wedge		4.8	6.6	2.0	13.9	4.5	6.4	1.9	13.4	4.5	6.4	1.7	13.2
Leeds all		4.4	5.9	1.8	12.6	4.3	5.8	1.7	12.3	4.2	5.8	1.5	12.1

Data Source: AXCIOM Lifestyle Survey 2009-2011													DP: S					
	Property type by %									Length of residence by %								
	Owned			Rented - Council			Rented - Private			Less than 1 year			2-5 years			More than 5 years		
	09	10	11	09	10	11	09	10	11	09	10	11	09	10	11	09	10	11
Cluster	66.0	66.9	33.0	22.4	22.1	49.8	11.6	10.9	0.1	6.3	4.7	1.7	15.2	18.5	12.6	78.5	76.8	85.7
Wedge	62.1	62.3	39.5	25.0	24.7	53.4	12.9	13.0	0.0	8.0	6.3	4.7	20.9	20.9	19.4	71.1	72.8	75.9
Leeds all	61.5	61.6	39.0	24.0	23.9	61.2	14.5	14.6	0.0	7.9	8.1	5.1	20.3	20.0	18.5	71.9	71.9	76.4
Income by %	<10k			10-20k			20-30k			30-40k			40-50k			50k+		
	09	10	11	09	10	11	09	10	11	09	10	11	09	10	11	09	10	11
	Cluster	22	19	18	23	24	24	13	17	19	16	17	20	14	14	11	13	9
Wedge	20	19	17	21	20	23	17	15	17	16	19	16	13	14	13	13	14	13
Leeds all	20	18	18	21	20	23	16	15	16	15	18	17	14	13	13	14	16	14
Struggling with payments by %	Food						Bills			Mortgage								
	09			10			11			09			10			11		
	Cluster	17.6	11.2	6.7	18.7	12.4	7.0	3.5	2.9	0.8								
Wedge	17.1	9.9	6.4	16.3	11.8	8.4	2.5	2.5	1.8									
Leeds all	15.9	10.8	6.4	16.3	13.0	8.3	2.2	2.2	1.7									

## Being Healthy

Data Source: NHS Leeds										DP: Various - Listed with each report									
Birth Data DP: C	3 year rolling average of births below 2.5kg % low birth weight babies						Number and rate of conceptions per 1000 15-17 year olds												
	2006-08			2007-09			2008-10			June to May		2008-09		2009-10		2008-09		2009-10	
	Cluster	7.8	7.6	7.5	7.7	7.7	7.6	Cluster	54	66	51	66							
Wedge	7.7	7.7	7.6	Wedge	472	459	48	48											
Leeds all	7.8	7.8	7.6	Leeds all	1220	1145	45	43											
DP: C	% of women receiving a health and social care needs assessment at 12 weeks as a percentage of live births in the same year						DP: F	% Initiating breastfeeding April to March			% breastfeeding at 6 weeks April to March								
	2009		2010		2011			2009-10		2010-11		2009-10		2010-11					
	Cluster	82.4	84.3	86.6	63.6	56.1		36.4	31.2										
Wedge	82.4	82.7	84.9	62.1	59.8	34.9	34.7												
Leeds all	81.6	82.9	84.0	67.6	65.1	40.4	39.3												
DP: C	Number of emergency admissions by age group 2007-11						Number of emergency admissions to hospital for injury, poisoning and certain other consequences of external causes by age group												
	0-4		5-10		11-18		0-4		5-10		11-18								
	Cluster	1022	329	727	125	85	261												
Wedge	10977	3008	6552	1278	922	2455													
Leeds all	29793	8247	18194	3419	2522	6711													
Immunisation Data DP: F	% of 2 year olds receiving vaccinations in quarter 3 for:						% of 5 year olds receiving vaccinations in quarter 3 for:												
	Diphtheria			MMR			Diphtheria			MMR									
	09-10	10-11	11-12	09-10	10-11	11-12	09-10	10-11	11-12	09-10	10-11	11-12							
Cluster	98	97	100	89	89	96	94	95	99	91	94	97							
Wedge	96	96	98	84	86	95	97	96	97	91	93	97							
Leeds all	96	96	97	86	88	94	95	94	96	91	91	95							

Data Source: National Child Measurement Programme													DP: A		
Obesity	Obesity in Reception						Obesity in Year 6								
	% Obese			% Obese or overweight			% Obese			% Obese or overweight					
	08-09	09-10	10-11	08-09	09-10	10-11	08-09	09-10	10-11	08-09	09-10	10-11			
Cluster	10.2	13.0	11.5	21.3	24.6	26.5	18.1	19.6	19.9	34.9	35.8	32.9			
Wedge	9.0	10.2	9.6	20.8	23.4	23.9	20.1	20.0	20.6	34.7	35.0	34.8			
Leeds all	9.4	10.2	9.7	21.7	23.7	23.4	20.3	20.7	20.0	34.3	35.1	34.3			
Obesity	Obesity in Reception 3 year average 2008-2011						Obesity in Year 6 3 year average 2008-2011								
	% Obese			% Obese or overweight			% Obese			% Obese or overweight					
	Cluster	11.60	24.23	19.16	34.56										
Wedge	9.61	22.74	20.24	34.83											
Leeds all	9.77	22.96	20.32	34.56											

## Stay Safe

Data Source: Children's Services					DP: Various - Listed with each report					
Number of LAC and Child protection plans	The number of children and young people looked after by the Local Authority - March					The number of children with child protection plans - March				
	based on home address before coming into care				based on placement address					DP: S
	DP: S	2011	2012	2012	2012	2011	2012	2012	2012	2012
Cluster	46	43	40	40	40	27	48			
Wedge	0	505	442	442	442	0	367			
Leeds all	1439	1454	1454	1454	1454	947	1019			

Number of Common Assessments (CAFs)	Social Care				Social Care Referrals			Requests for Service		
	DP: C	2008	2009	2010	2011	DP:A	2009	2010	2011	DP:S
Cluster	10	40	43	31	Cluster	420	456	481		985
Wedge	128	234	410	313	Wedge	5505	5001	5218		11184
Leeds all	457	849	1115	892	Leeds all	14248	13784	14000		30539

Number of Child and Adolescent Mental Health Services referrals								
DP: S	aged 11 and under				aged 12-18		total referrals	
	September-October	2009-10	2010-11	2009-10	2010-11	2009-10	2010-11	
Cluster		59	33	100	63	159	96	
Wedge		649	421	973	555	1622	976	
Leeds all		1767	1124	2976	1730	4743	2854	

## Make a positive Contribution

Data Source: West Yorkshire Police										DP: C
Property Crime	Burglary dwelling		Burglary elsewhere		Criminal damage		Robbery		Vehicle crime	
	10	11	10	11	10	11	10	11	10	11
Cluster	417	372	223	159	387	302	22	12	191	184
Wedge	2555	1992	2378	2038	5038	3731	415	301	3140	2801
Leeds all	9508	8487	5681	5408	13599	10426	1297	1226	9168	7971

Personal Crime	Drug Offences		Theft from person		Violent crime	
	10	11	10	11	10	11
Cluster	18	94	44	28	259	232
Wedge	563	1049	1382	2023	5322	5047
Leeds all	1248	3192	2235	3034	11233	10896

Domestic Violence Incidents	Number of incidents recorded with a domestic qualifier or disposition code on the Storm WYP incident recording system - 2011
Cluster	443
Wedge	5227
Leeds all	14525

Data Source: Youth Offending Service									DP: A
Youth Offending	Number of Offenders				Number of Offences				
	07-08	08-09	09-10	10-11	07-08	08-09	09-10	10-11	
Cluster	97	64	49	49	248	153	86	87	
Wedge	818	610	484	500	1943	1418	946	913	
Leeds all	2741	2166	1522	1511	6331	4883	3134	3150	

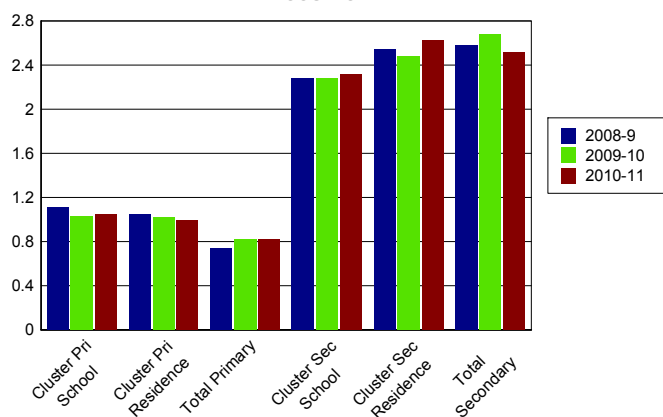
  

April 2010 - March 2011 Number of offences by young offenders									
	Burglary	Breaches	Criminal Damage	Drugs Offences	Motoring and Vehicle	Other	Public Order	Theft and handling	Violence against the person
Cluster	8	6	7	7	6	17	6	14	16
Wedge	81	80	91	59	53	104	86	188	171
Leeds all	291	270	328	204	218	358	282	612	587

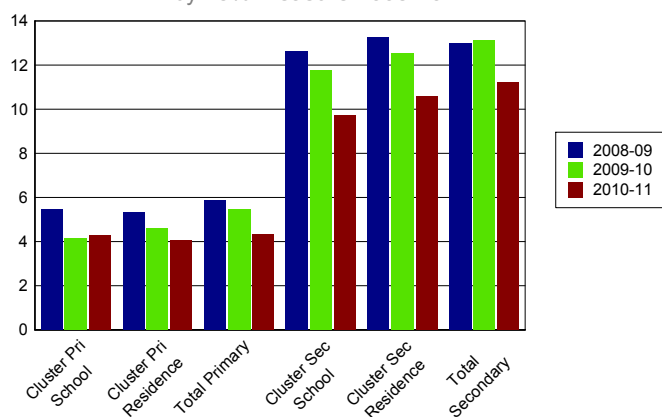
Data Source: School Census												DP: A
Attendance and persistent absence by percentage	Attendance			Authorised Absence			Unauthorised Absence			Persistent Absence 15%		
	08-09	09-10	10-11	08-09	09-10	10-11	08-09	09-10	10-11	08-09	09-10	10-11
<b>Primary</b>												
Cluster school	94	95	95	5	4	4	1.1	1.0	1.0	5.4	4.1	4.3
Cluster residence	94	95	95	5	4	4	1.0	1.0	1.0	5.3	4.6	4.1
Total primary	94	94	95	5	5	4	0.7	0.8	0.8	5.9	5.5	4.3
<b>Secondary</b>												
Cluster school	91	92	93	6	6	4	2.3	2.3	2.3	12.6	11.8	9.7
Cluster residence	91	92	93	6	5	4	2.5	2.5	2.6	13.2	12.5	10.6
Total secondary	92	92	92	6	6	5	2.6	2.7	2.5	13.0	13.1	11.2

**% Unauthorised Absence**

2008-2011

**% Persistent Absence**

by 15% measure 2008-2011



Data Source: Children's Services												DP: A
Exclusions	Fixed Term Exclusions						Permanent Exclusions					
	Number			Rate per thousand			Number			Rate per thousand		
Primary	08-09	09-10	10-11	08-09	09-10	10-11	08-09	09-10	10-11	08-09	09-10	10-11
Cluster school	1	0	0	0.5	0.0	0.0	0	0	0	0.0	0.0	0.0
Cluster residence	3	1	3	1.2	0.4	1.2	0	0	0	0.0	0.0	0.0
Total primary	467	371	455	7.7	6.0	7.3	2	2	2	0.0	0.0	0.0
<b>Secondary</b>												
Cluster school	221	48	21	101.0	21.8	9.6	4	3	3	1.8	1.4	1.4
Cluster residence	163	75	68	115.4	52.6	48.1	3	2	3	2.1	1.4	2.1
Total secondary	4350	4286	3806	93.6	93.1	83.2	52	57	44	1.1	1.2	1.0

## Enjoy and Achieve

**Data Source: Keypas and DFE performance tables**
**DP: A**
**Foundation Stage Profile Data** The percentage of pupils achieving a good level of development (78+ points overall and 6+ points in all PSE and CCL strands)

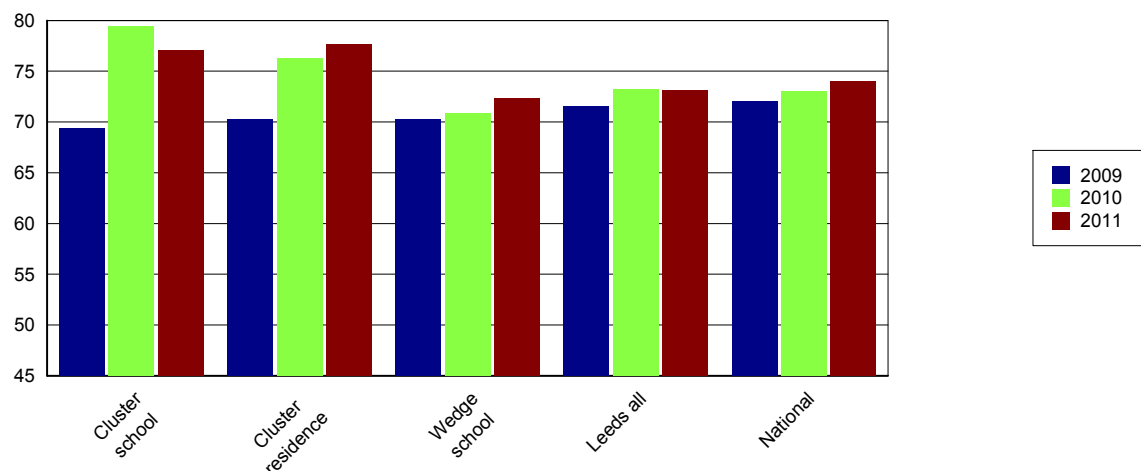
	2008	2009	2010	2011
Cluster school	39	36	41	52
Cluster residence	41	38	39	51
Leeds all	47	51	53	58

KS2 Data DP: A	English 4+			English 5+			Maths 4+			Maths 5+			English & Maths 4+		
	09	10	11	09	10	11	09	10	11	09	10	11	09	10	11
Cluster school	82	83	85	24	27	25	74	85	84	26	30	30	69	79	77
Cluster residence	81	82	84	24	30	27	75	83	85	29	33	33	70	76	78
Wedge school	78	78	81	23	27	27	76	77	78	30	29	28	70	71	72
Leeds all	79	79	81	28	31	32	77	79	78	33	31	32	72	73	73
National	80	80	82	29	33	29	79	79	80	35	34	35	72	73	74

KS2 Data - Expected progress	Made 2 levels of progress in English		Made 2 levels of progress in Maths	
	Number of pupils	Percentage	Number of pupils	Percentage
Cluster school	214	93.0	207	89.2
Wedge school	2294	88.4	2190	84.4
Leeds all	6334	88.6	6087	85.0
National		84.0		83.0

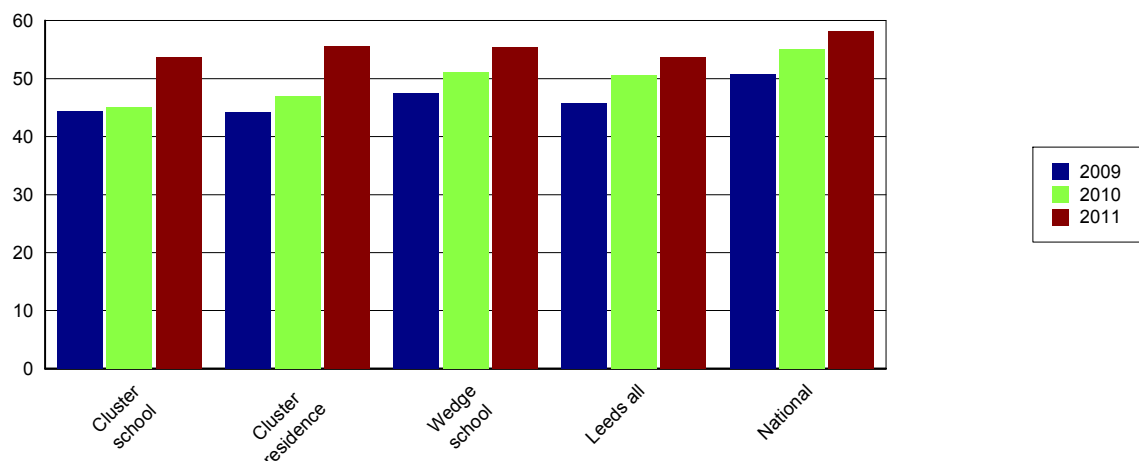
### Percentage of English and Maths

Level 4+



Data Source: EPAS and DFE performance tables												DP: A	
The results are for GCSE & equivalent qualifications. The calculation of achieving no qualifications includes all qualifications													
KS4 Data	% of 5+ A*-C			% of 5+ A*-C inc Eng & Maths			% English Baccalaureate	% of 5+ A*-G			% achieving no qualifications		
	09	10	11	09	10	11	11	09	10	11	09	10	11
Cluster school	59	71	79	44	45	54	15	94	93	93	2	3	1
Cluster residence	63	74	83	44	47	56	16	90	94	94	3	2	1
Wedge school	68	80	85	47	51	55	9	92	95	96	1	1	1
Leeds all	67	76	82	46	51	54	13	91	94	94	2	2	1
National	70	76	81	51	55	58	15	94	95	95		1	1

### Percentage 5 A\*-C Including English and Maths



## Achieve Economic Well Being

Key: Not in Employment, Education or Training (NEET), In Employment, Education or Training (EET), in Full time Education (FE)													
Data Source: November destination survey													DP: S
NEET/FE		Number of NEET			% NEET			Number of FE			% FE		
		2009	2010	2011	2009	2010	2011	2009	2010	2011	2009	2010	2011
Cluster school	Year 11	37	21	16	9	5	4	317	337	347	79	84	87
	Year 12	SUPP	SUPP	SUPP	SUPP	SUPP	SUPP	107	90	96	92	83	94
	Year 13	SUPP	SUPP	SUPP	SUPP	SUPP	SUPP	63	83	68	85	80	78
Cluster residence	Year 11	23	14	10	8	5	3	246	271	267	81	88	86
	Year 12	SUPP	SUPP	SUPP	SUPP	SUPP	SUPP	150	119	100	94	88	93
	Year 13	SUPP	SUPP	SUPP	SUPP	SUPP	SUPP	79	112	93	85	79	83
Leeds all	Year 11	646	393	357	8	5	5	6703	7194	6564	80	87	87
	Year 12	132	67	115	3	2	3	3436	3476	3550	90	93	93
	Year 13	121	135	120	5	4	4	2067	2350	2593	78	76	84

Data Source: Integrated Youth Support Service										DP: O
16-18 NEET and EET Nov 2011 to Jan 2012	NEET		EET		Not Known		Other Activity			
	Number	%	Number	%	Number	%	Number	%		
Cluster	53	6.3	785	92.9	SUPP	SUPP	SUPP	SUPP		
Wedge	589	7.3	7284	90.7	173	2.2	21	0.3		
Leeds all	1538	7.0	20170	91.7	343	1.6	58	0.3		

**Please Note:** Leeds totals for 16-18 NEET will not match publicised totals as published totals include a proportion of those whose status has expired